

PM 1, PM 2

GB Service instructions





Contents

1.	Symbols used in this document	3
2.	Torques and lubricants	3
3.	Service tools	3
3.1	Standard tools	3
3.2	Torque tools	3
4.	Dismantling and assembly	4
4.1	General description	4
4.2	PM 1	4
4.3	PM 2	5
5.	Control panels	10
5.1	Control panel on PM 1	10
5.2	Control panel on PM 2	11
6.	Fault finding	13
6.1	PM 1	13
6.2	PM 2	14
7.	Drawings	16
7.1	Exploded view, PM 1	16
7.2	Exploded view, PM 2	16

1. Symbols used in this document



Warning

If these safety instructions are not observed, it may result in personal injury.



Warning

If these instructions are not observed, it may lead to electric shock with consequent risk of serious personal injury or death.

Caution

If these safety instructions are not observed, it may result in malfunction or damage to the equipment.

Note

Notes or instructions that make the job easier and ensure safe operation.

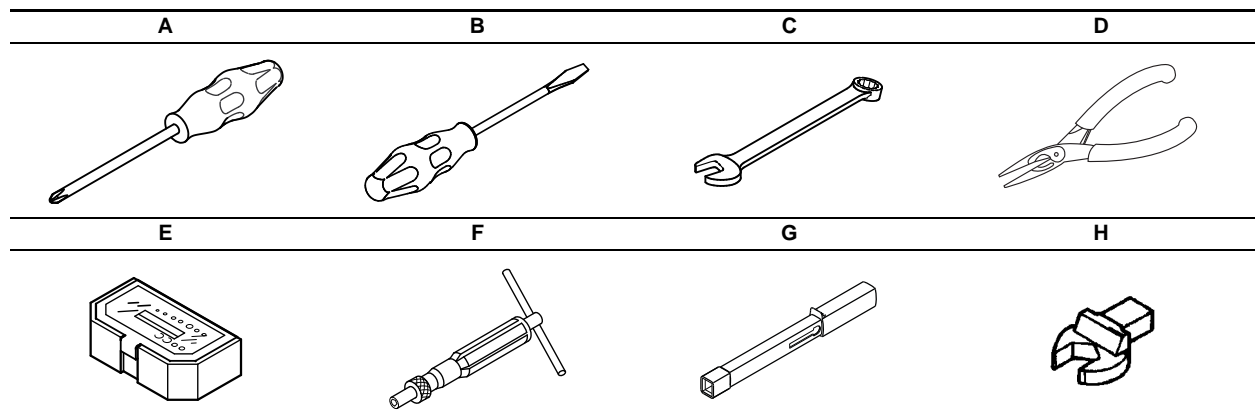
2. Torques and lubricants

See chapter 7. *Drawings* for position numbers.

Pos.	Designation	Quantity	Dimension	Torque [Nm]	Lubricant
1	Screw, PM 1	4	D3.5x20	1.3 - 1.5	-
	Screw, PM 2	4	D3.5x35	1.3 - 1.5	-
16	Screw, PM 1	4	D4.7x40	2.8 - 3	-
	Screw, PM 2	8	D4.7x40	2.8 - 3	-
11	Cable nut	2	M20	2.8 - 3	-
6	O-ring	1	-	-	Rocol 22

Rocol 22, part number RM2924 (1 kg).

3. Service tools



3.1 Standard tools

Pos.	Designation	For pos.	Further information	Part number
A	Cross-head screwdriver	1, 9	PH1	SV0279
B	Screwdriver	11, 4	0.5 x 3 x 60	SV0803
C	Ring/open-end spanner	14	23 mm	-
D	Needle nose pliers	10, 18	-	-
E	Bits kit	1, 9	-	SV2010

3.2 Torque tools

Pos.	Designation	For pos.	Further information	Part number
F	Torque screwdriver	E	1-6 Nm	SV0438
G	Torque wrench	H	-	-
H	Open-end insert tool	14	23 mm	-

4. Dismantling and assembly

4.1 General description

If it is necessary to dismantle the PM unit, either because it is choked or damaged, follow the instructions in the following sections.

Position numbers of parts (digits) refer to drawings and parts lists see section 7. *Drawings*; position numbers of tools (letters) refer to section 3. *Service tools*.

Before dismantling

- Switch off the power supply to the PM unit.
- Disconnect the power supply cable at the connection point.
- Close the isolating valves, if fitted, to avoid draining the piping system.

Before assembly

- Clean and check all parts.
- Replace defective parts by new parts.
- Order the necessary service kits.
- Always replace gaskets and O-rings when the PM unit is serviced.

During assembly

- Lubricate and tighten screws and nuts to the correct torque. See section 2. *Torques and lubricants*.

4.2 PM 1

4.2.1 Removing the supply cables

1. Remove screws (pos. 1), and take off front cover (pos. 2).
2. Remove terminal board cover (pos. 3).
3. Disconnect cables (pos. 9 and 10) from the terminals on the electronic unit (pos. 4).
4. Loosen cable entries (pos. 11), and pull cables (pos. 9 and 10) out of the cable entries.

4.2.2 Fitting the supply cables

1. Lead cables (pos. 9 and 10) into the cable entries (pos. 11), and tighten them.

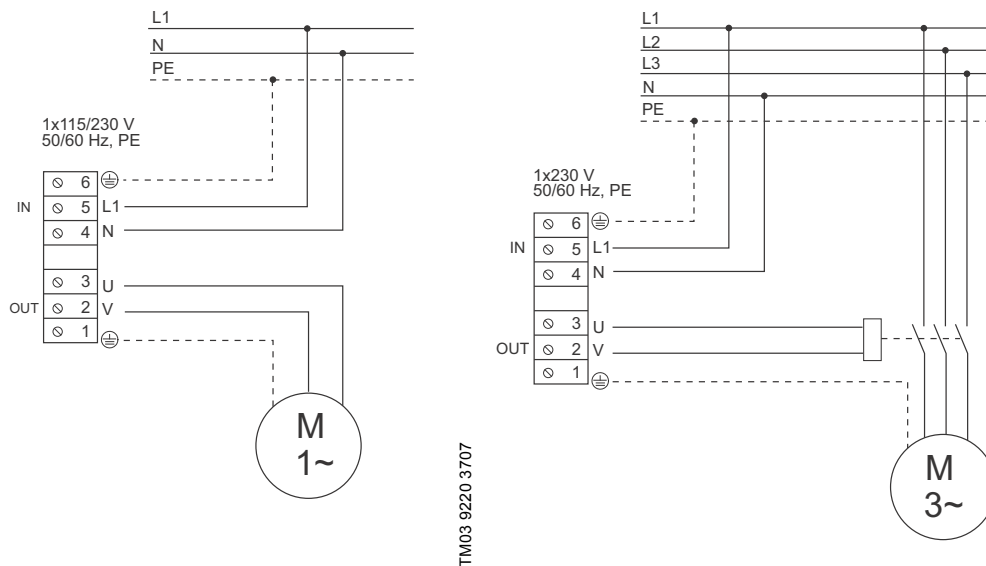


Fig. 1 Connecting cables to single- and three-phase motors

2. Connect cables (pos. 9 and 10) to the terminals in the electronic unit (pos. 4).
3. Fit terminal board cover (pos. 3).
4. Fit front cover (pos. 2), and fit and cross-tighten screws (pos. 1).

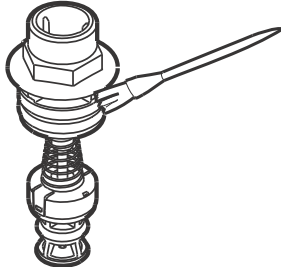
4.2.3 Removing the valve

1. Remove side cover (pos. 8) and clamp (pos. 7).
2. Remove the fitting and valve (pos. 6) out of the housing (pos. 5) by pulling the outlet fitting.

Note Check that the valve seat is intact.

4.2.4 Fitting the valve

1. Lubricate the O-ring. See Fig. 2



TM04 5263 2909

Fig. 2 Lubricating the O-ring

2. Press valve (pos. 6) home in the housing (pos. 5).
3. Fit clamp (pos. 7) and side cover (pos. 8).

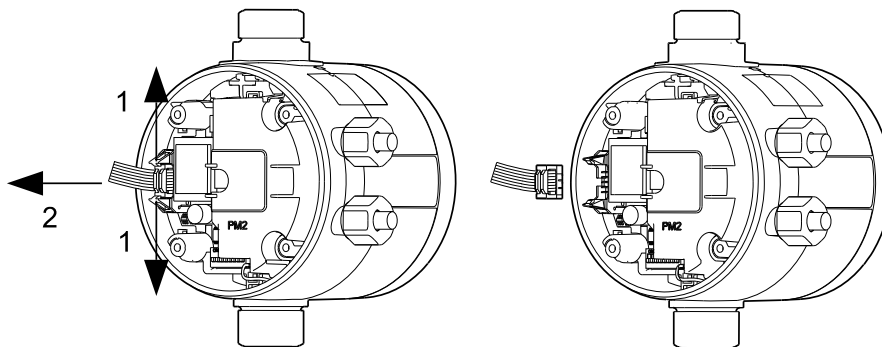
4.3 PM 2

4.3.1 Removing the electronic unit

1. Remove screws (pos. 1), and take off front cover (pos. 2).

Caution Do not pull out the front cover using force as the flat cable must be removed first.

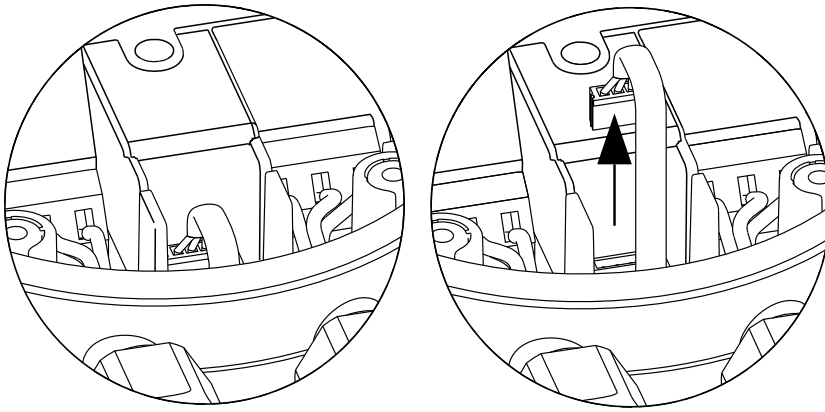
2. Pull the flat cable out of the plug in the electronic unit (pos. 4).



TM04 4538 1509

Fig. 3 Removing the flat cable

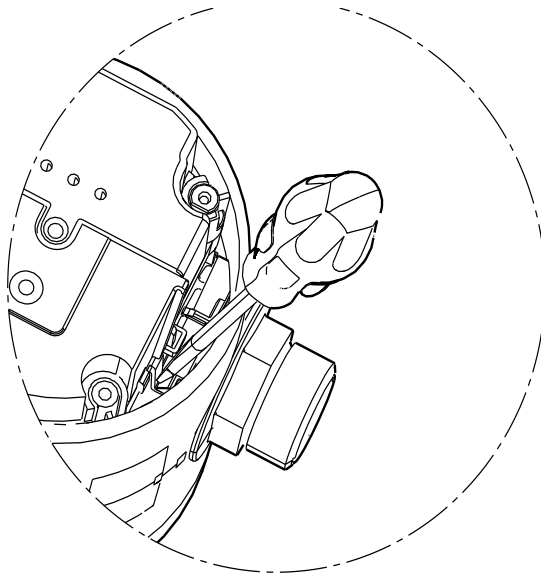
3. Remove terminal board cover (pos. 3).
4. Disconnect cables (pos. 9 and 10) from the terminals on the electronic unit (pos. 4).
5. Loosen cable entries (pos. 11), and pull cables (pos. 9 and 10) out of the cable entries.
6. Remove plug for sensor (pos. 13).



TM04 4533 1509

Fig. 4 Removing the plug for sensor

7. Remove the complete electronic unit (pos. 4).



TM04 4786 2109

Fig. 5 Removing the electronic unit

4.3.2 Fitting the electronic unit

1. Fit the complete electronic unit (pos. 4).

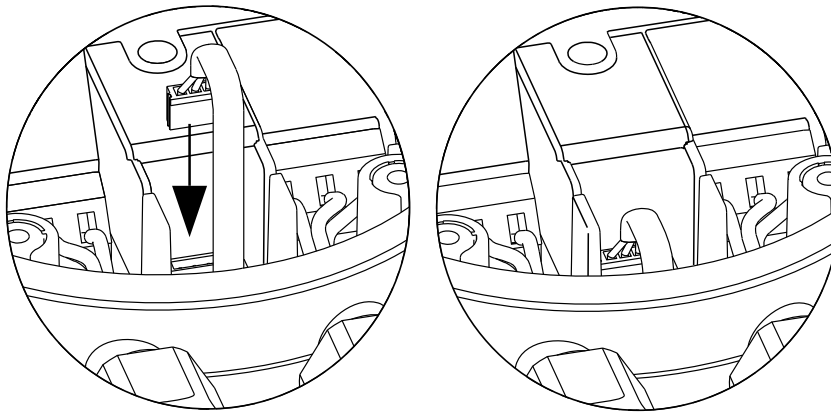
Note

Ensure that the sensor cable is laid up to the control unit so that it can reach the plugs and does not get pinched.

2. Fit plug for sensor (pos. 13) in the electronic unit (pos. 4).

Note

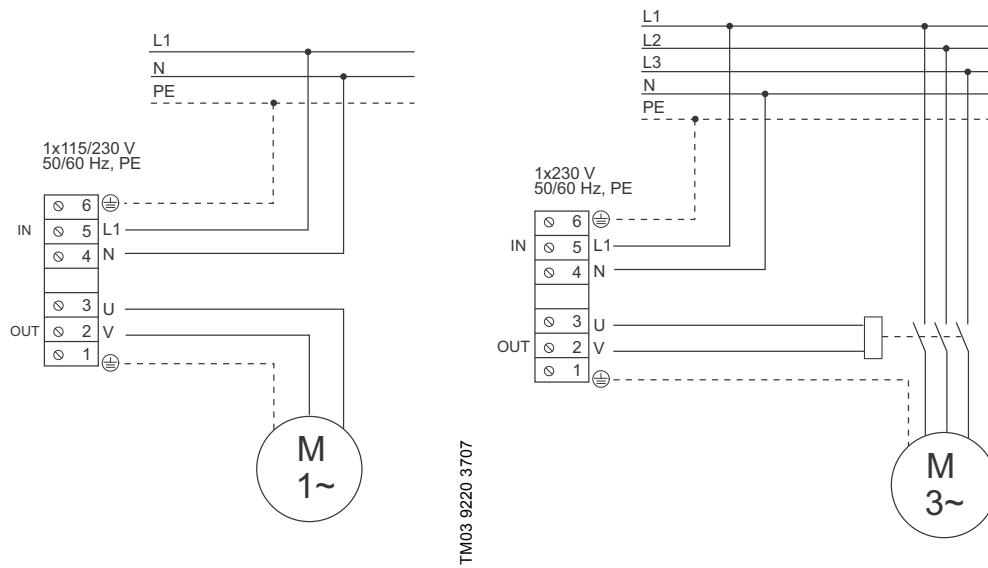
Be careful not to disconnect the lower sensor plug when fitting the shown plug for the electronic unit.



TM04 4537 1509

Fig. 6 Fitting the plug for sensor

3. Lead cables (pos. 9 and 10) into the cable entries (pos. 11), and tighten them.

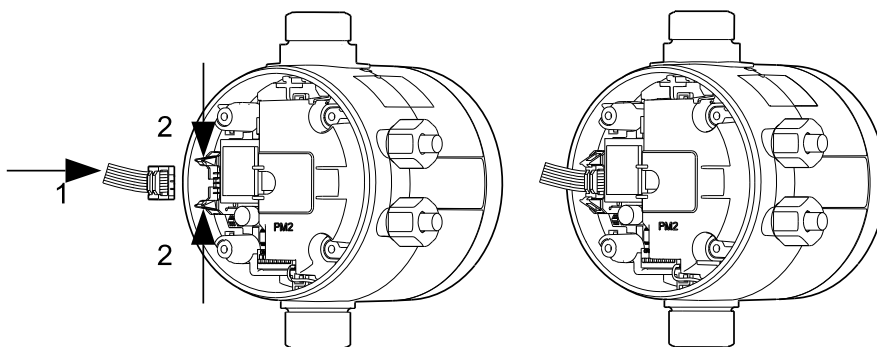


TM03 9220 3707

TM04 1953 1508

Fig. 7 Connecting cables to single- and three-phase motors

4. Connect cables (pos. 9 and 10) to the terminals in the electronic unit (pos. 4).
5. Fit terminal board cover (pos. 3).
6. Fit the flat cable in the plug on the electronic unit (pos. 4).



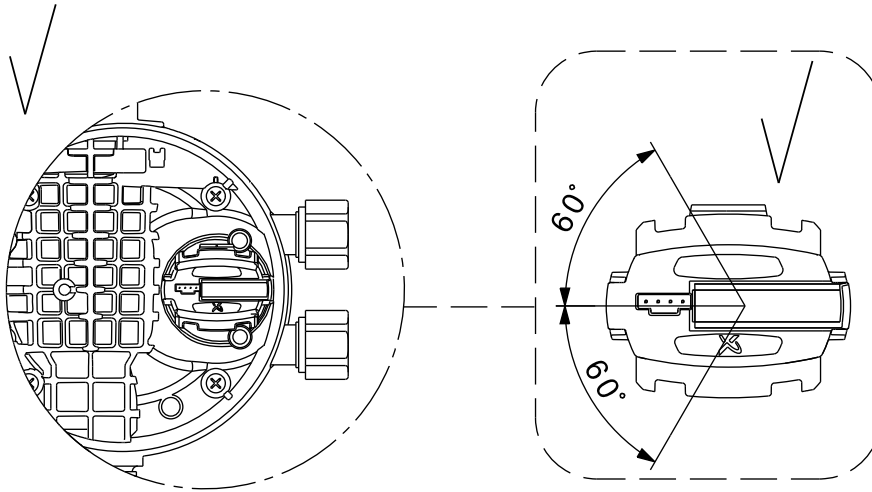
TM04 4742 1909

Fig. 8 Connecting the flat cable

7. Fit front cover (pos. 2), and fit and cross-tighten screws (pos. 1).

4.3.3 Removing the pressure sensor

1. Follow the instructions in section [4.3.1 Removing the electronic unit](#).
2. Remove plug for sensor (pos. 13).
3. Note how the sensor is positioned.



TM04 5192 2809

Fig. 9 Correct fitting of sensor

4. Unscrew pressure sensor (pos. 12) counter-clockwise until it is free.

4.3.4 Fitting the pressure sensor

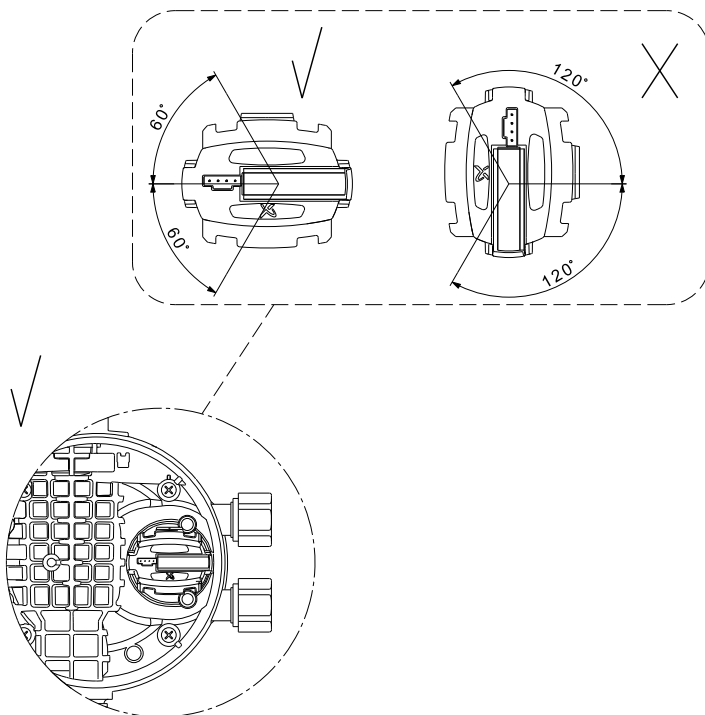
1. Screw the pressure sensor (pos. 12) until its tightened. See fig. 10. Then check the position according to fig. 9 and the note made in step 3. *Note how the sensor is positioned.*

Caution

If the pressure sensor not is in the allowed area, then it is because the can be tightened further or the thread is damaged. If the thread is damaged then the PM unit must be replaced.

Note

When the pressure sensor is tightened, then it is not allowed afterwards to turn it counterclockwise.



TM04 4802 2109

Fig. 10 Correct fitting of sensor

2. Fit plug for sensor (pos. 13) in the sensor (pos. 12).
3. Follow the instructions in section [4.3.2 Fitting the electronic unit](#).

4.3.5 Removing the diaphragm

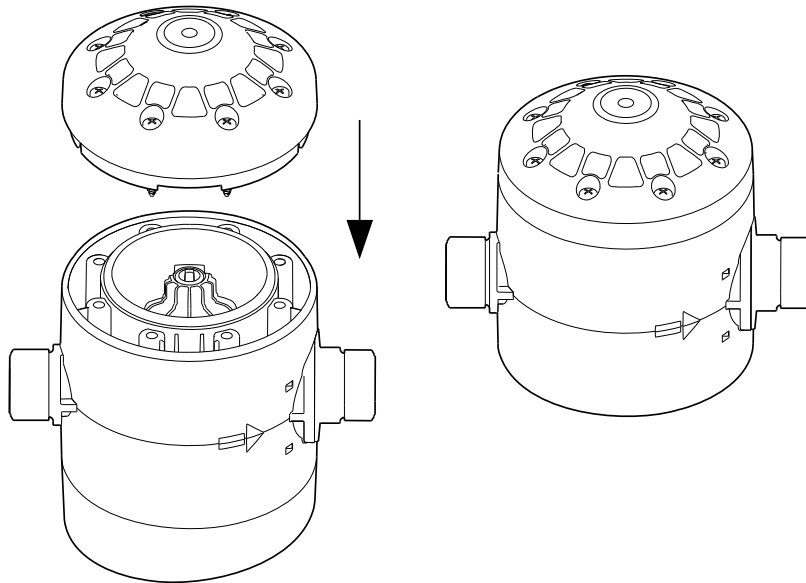
1. Slacken screws (pos. 16), and remove cover for diaphragm (pos. 15).
2. Remove diaphragm (pos. 14).

4.3.6 Fitting the diaphragm

1. Fit diaphragm (pos. 14) in the cover for diaphragm (pos. 15).

Note *The diaphragm must not be lubricated.*

2. Fit cover for diaphragm (pos. 15), and fit and cross-tighten screws (pos. 16) in steps to prevent the back cover from tilting.



TM04 4535 1509

Fig. 11 Correct fitting of cover for diaphragm

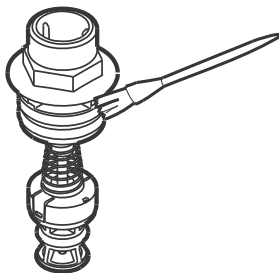
4.3.7 Removing the valve

1. Remove side cover (pos. 8) and clamp (pos. 7).
2. Remove the fitting and valve (pos. 6) out of the housing (pos. 5) by pulling the outlet fitting.

Note *Check that the valve seat is intact.*

4.3.8 Fitting the valve

1. Lubricate the O-ring. See Fig. 12



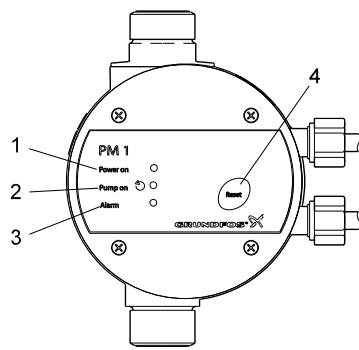
TM04 5263 2909

Fig. 12 Lubricating the O-ring

2. Press valve (pos. 6) home in the housing (pos. 5).
3. Fit clamp (pos. 7) and side cover (pos. 8).

5. Control panels

5.1 Control panel on PM 1



TM03 9360 1708

Fig. 13 Control panel

Pos.	Description	Function
1	"Power on"	The green indicator light is permanently on when the power supply has been switched on.
2	"Pump on"	The green indicator light is permanently on when the pump is running.
3	"Alarm"	The red indicator light is permanently on or flashes when the pump has stopped due to an operating fault. See section 6.1 PM 1 .
4	[Reset]	The button is used for <ul style="list-style-type: none"> resetting fault indications enabling and disabling of the anti-cycling function. See the installation and operating instructions for further information.

5.2 Control panel on PM 2

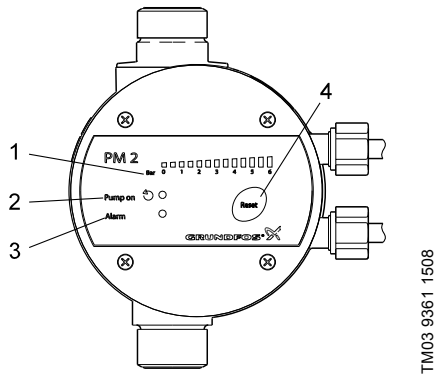


Fig. 14 Control panel

Pos.	Description	Function
1	"Pressure scale"	The pressure scale has 13 light fields indicating the pressure from 0 to 6 bar. All light fields illuminate briefly when the power supply is switched on.
2	"Pump on"	The green indicator light is permanently on when the pump is running. The indicator light also illuminates briefly when the power supply is switched on.
3	"Alarm"	The red indicator light is permanently on or flashes when the pump has stopped due to an operating fault. See section 6.2 PM 2 . The indicator light also illuminates briefly when the power supply is switched on.
4	[Reset]	The button is used for <ul style="list-style-type: none"> resetting of fault indications checking of DIP switch settings. See section 5.2.3 Checking the DIP switch settings.

5.2.1 DIP switches

The PM 2 has a number of settings which can be made with the DIP switches behind the control panel. See fig. 15.

OFF/ON	
1.5 BAR 1	<input type="checkbox"/> +0.5
2	<input type="checkbox"/> +1.0
3	<input type="checkbox"/> +1.0
4	<input type="checkbox"/> +1.0
5	<input type="checkbox"/> STOP = START + 1 BAR
6	<input type="checkbox"/> AUTO RESET
7	<input type="checkbox"/> ANTI CYCLING
8	<input type="checkbox"/> MAX RUN 30 MIN.

Fig. 15 DIP switches

DIP switch		Description	Default setting
No	Name		
		Start pressure (p_{start}) With these DIP switches the start pressure can be set from 1.5 to 5.0 bar in steps of 0.5 bar.	
1-4	START	Example: DIP switch 1 = "ON" DIP switch 2 = "ON" Start pressure = $1.5 + 0.5 + 1 = 3$ bar See the installation and operating instructions for further information.	All set to OFF ($p_{start} = 1.5$ bar)
		Start/stop with 1 bar differential pressure (This operating mode is only suitable for systems with a pressure tank). When the DIP switch has been set to "ON", the pump stop pressure will be equal to $p_{start} + 1$ bar.	
5	STOP = START + 1 BAR	See the installation and operating instructions for further information. In systems without a pressure tank, the DIP switch must be set to "OFF".	OFF (start/stop according to water consumption)
		Automatic resetting of alarms When the DIP switch has been set to "ON", the cycling and dry-running alarms will automatically be reset if they have been activated.	
6	AUTO RESET	See the installation and operating instructions for further information.	OFF (manual resetting)
		Anti-cycling When the DIP switch has been set to "ON", the pump will be stopped in case of cycling.	
7	ANTI CYCLING	See the installation and operating instructions for further information.	OFF
		Maximum continuous operating time (30 minutes) When the DIP switch has been set to "ON", the pump will automatically be stopped if it has been running continuously for 30 minutes.	
8	MAX RUN 30 MIN.	See the installation and operating instructions for further information.	OFF

5.2.2 Enabling the DIP switch settings

Note When the desired DIP switch settings have been made, they must be enabled, otherwise the PM 2 cannot detect the settings.

To enable the DIP switch settings, press [Reset] or disconnect and reconnect the power supply to the unit.

5.2.3 Checking the DIP switch settings

When [Reset] is kept pressed for at least 3 seconds, the light fields for the DIP switches set to "ON" will illuminate in the pressure scale.

The light fields illuminate from right to left. This means that if the light field to the far right is on, DIP switch 8 has been set to "ON", etc. See the table below.

Light field [bar]	2.5	3.0	3.5	4.0	4.5	5.0	5.5	6.0
DIP switch no	1	2	3	4	5	6	7	8

6. Fault finding

6.1 PM 1



Warning

Before starting work on the pump/PM unit, make sure that the power supply has been switched off and that it cannot be accidentally switched on.

Fault	Cause	Remedy
1. The green "Power on" indicator light is off.	a) The fuses in the electric installation have blown.	Replace the fuses. If the new fuses also blow, check the electric installation.
	b) The earth leakage circuit breaker or the voltage-operated circuit breaker has been tripped out.	Cut in the circuit breaker.
	c) No power supply.	Contact the power supply authorities.
	d) The PM unit is defective.	Repair or replace the PM unit.
2. The green "Pump on" indicator light is on, but the pump does not start.	a) The power supply to the pump is disconnected after the PM unit.	Check the plug and cable connections, and check if the built-in circuit breaker of the pump is switched off.
	b) The motor protection of the pump has tripped out due to overload.	Check if the motor/pump is blocked.
	c) The pump is defective.	Repair or replace the pump.
	d) The PM unit is defective.	Repair or replace the PM unit.
3. The pump does not start when water is consumed. The "Pump on" indicator light is off.	a) Too big difference in height between the PM unit and the tapping point.	Adjust the installation, or select a PM unit with a higher start pressure.
	b) The PM unit is defective.	Repair or replace the PM unit.
4. Frequent starts/stops.	a) Leakage in the pipework.	Check and repair the pipework.
	b) Leaky non-return valve.	Clean or replace the non-return valve.
	c) A valve close to the PM 1 outlet has been closed.	Open the valve.
5. The pump does not stop.	a) The pump cannot deliver the necessary discharge pressure.	Replace the pump.
	b) A PM unit with too high start pressure is installed.	Select a PM unit with a lower start pressure.
	c) The PM unit is defective.	Repair or replace the PM unit.
	d) The non-return valve is stuck in open position.	Clean or replace the non-return valve.
6. The red "Alarm" indicator light is permanently on.	a) Dry running. The pump needs water.	Check the pipework.
	b) The power supply to the pump is disconnected after the PM unit.	Check the plug and cable connections, and check if the built-in circuit breaker of the pump is switched off.
	c) The motor protection of the pump has tripped out due to overload.	Check if the motor/pump is blocked.
	d) The pump is defective.	Repair or replace the pump.
	e) The PM unit is defective.	Repair or replace the PM unit.
7. The red "Alarm" indicator light is flashing.	a) Cycling. A tap has not been closed entirely after use.	Check that all taps have been closed.
	b) Cycling. There is a minor leakage in the system.	Check the system for leakages.

6.2 PM 2



Warning

Before starting work on the pump/PM unit, make sure that the power supply has been switched off and that it cannot be accidentally switched on.

Fault	Cause	Remedy
1. The green light field for "0 bar" is off even if the power supply has been switched on.	a) The fuses in the electric installation have blown.	Replace the fuses. If the new fuses also blow, check the electric installation.
	b) The earth leakage circuit breaker or the voltage-operated circuit breaker has been tripped out.	Cut in the circuit breaker.
	c) No power supply.	Contact the power supply authorities.
	d) The PM unit is defective.	Repair or replace the PM unit.
2. The green "Pump on" indicator light is on, but the pump does not start.	a) The power supply to the pump is disconnected after the PM unit.	Check the plug and cable connections, and check if the built-in circuit breaker of the pump is switched off.
	b) The motor protection of the pump has tripped out due to overload.	Check if the motor/pump is blocked.
	c) The pump is defective.	Repair or replace the pump.
	d) The PM unit is defective.	Repair or replace the PM unit.
3. The pump does not start when water is consumed. "Pump on" is off.	a) Too big difference in height between the PM unit and the tapping point.	Adjust the installation, or increase the start pressure. See section 5.2.1 DIP switches .
	b) The PM unit is defective.	Repair or replace the PM unit.
4. System without pressure tank: Frequent starts/stops.	a) DIP switch 5 set to "ON".	Set DIP switch 5 to "OFF". See section 5.2.1 DIP switches .
	b) Leakage in the pipework.	Check and repair the pipework.
	c) The non-return valve is stuck in open position.	Clean or replace the non-return valve.
5. System with pressure tank: Frequent starts/stops.	a) The pressure tank has no precharge pressure, or the tank size is insufficient.	Check the tank precharge pressure, and recharge the tank, if necessary. If the size of the pressure tank is insufficient, set DIP switch 5 to "OFF", or replace the pressure tank.
	b) Leaky non-return valve.	Clean or replace the non-return valve.
6. The pump does not stop.	a) The pump cannot deliver the necessary discharge pressure.	Replace the pump.
	b) The start pressure is set too high.	Decrease the start pressure.
	c) The PM unit is defective.	Repair or replace the PM unit.
	d) The non-return valve is stuck in open position.	Clean or replace the non-return valve.
7. The red "Alarm" indicator light is permanently on.	a) Dry running. The pump needs water.	Check the pipework.
	b) The power supply to the pump is disconnected after the PM unit.	Check the plug and cable connections, and check if the built-in circuit breaker of the pump is switched off.
	c) The motor protection of the pump has tripped out due to overload.	Check if the motor/pump is blocked.
	d) The pump is defective.	Repair or replace the pump.
	e) The PM unit is defective.	Repair or replace the PM unit.
8. System without pressure tank: The red "Alarm" indicator light flashes once per period.	a) Cycling. A tap has not been closed entirely after use.	Check that all taps have been closed. See the installation and operating instructions for further information.
	b) Cycling. There is a minor leakage in the system.	Check the system for leakages. See the installation and operating instructions for further information.
9. System with pressure tank: The red "Alarm" indicator light flashes once per period.	a) Cycling. The pressure tank has no precharge pressure, or the tank size is insufficient.	Check the tank precharge pressure, and recharge the tank, if necessary. If the size of the pressure tank is insufficient, set DIP switch 5 to "OFF", or replace the pressure tank. See the installation and operating instructions for further information.
10. The red "Alarm" indicator light flashes twice per period.	a) Maximum continuous operating time (30 minutes). The pump has been running continuously for 30 minutes.	Check the system for leakages. Disable the function to allow the pump to run for 30 minutes. See the installation and operating instructions for further information.

Fault	Cause	Remedy
11. The red "Alarm" indicator light flashes three times per period, and each pump start is delayed a few seconds.	a) Too many start/stop sequences within a short period. The pressure tank has no precharge pressure, or the tank size is insufficient.	Check the tank precharge pressure, and recharge the tank, if necessary. If the size of the pressure tank is insufficient, set DIP switch 5 to "OFF", or replace the pressure tank.
	b) Too many start/stop sequences within a short period. The PM 2 is set to start/stop with 1 bar differential pressure, i.e. DIP switch 5 is set to "ON", but no pressure tank has been installed in the system.	Set DIP switch 5 to "OFF".
12. The red "Alarm" indicator light flashes four times per periode.	a) Pressure sensor fault.	Repair or replace the PM unit.

7. Drawings

7.1 Exploded view, PM 1

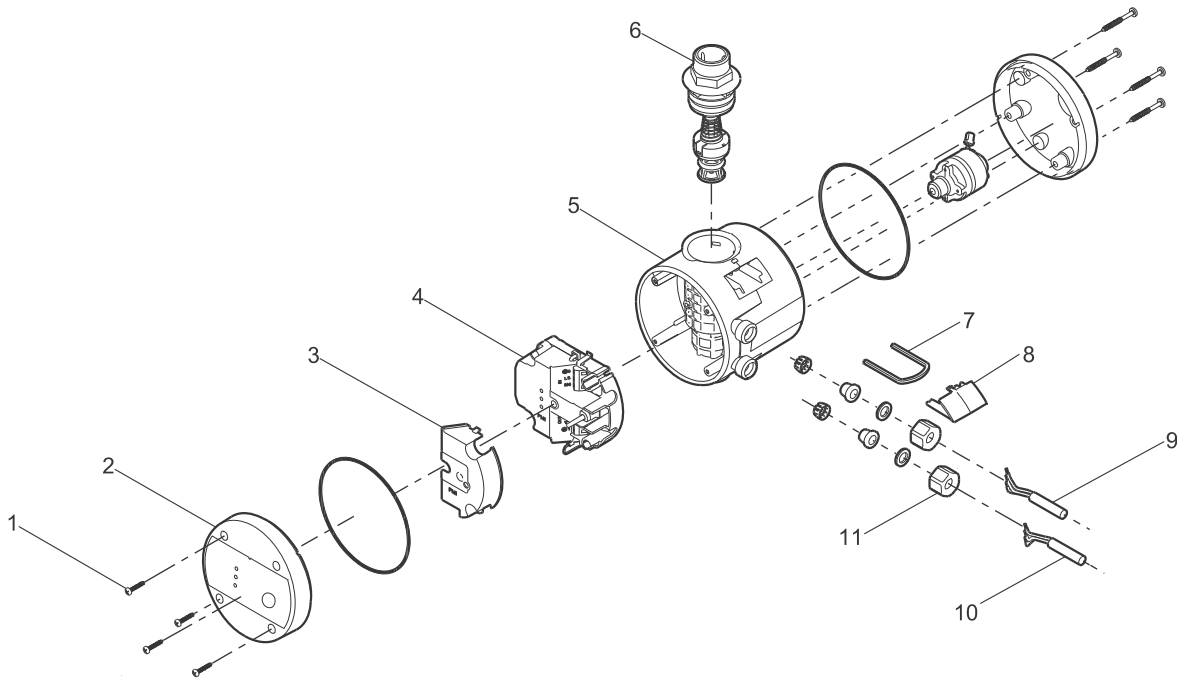


Fig. 16 Exploded view, PM 1

7.2 Exploded view, PM 2

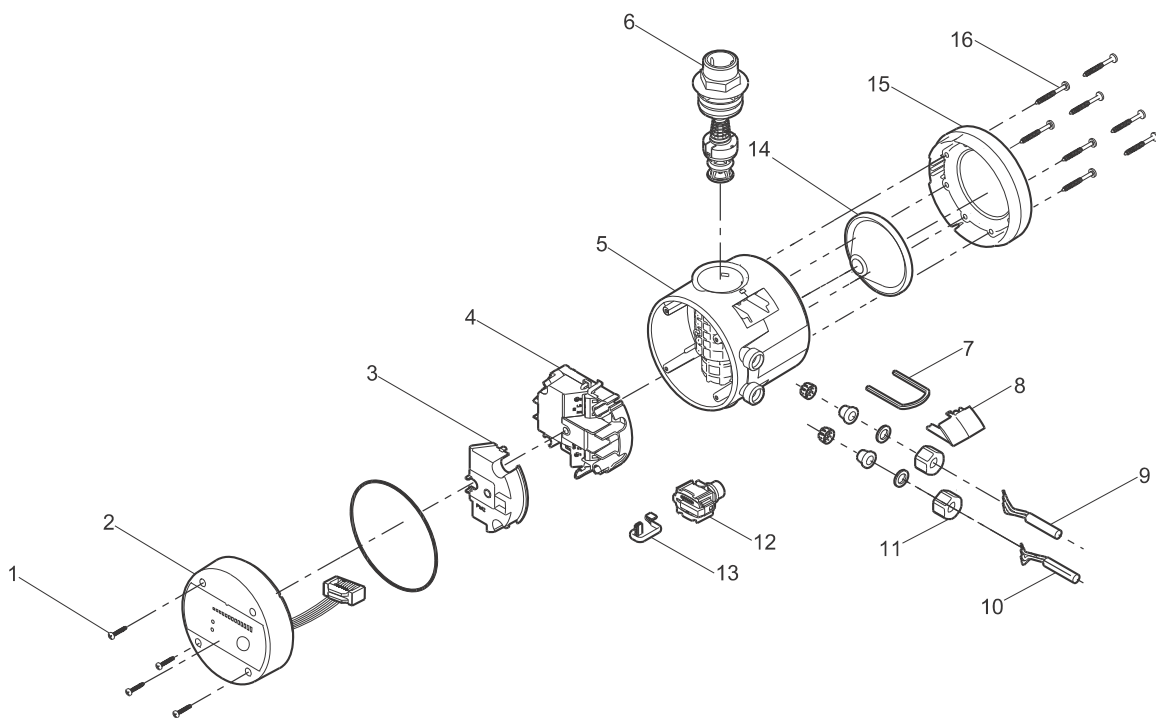


Fig. 17 Exploded view, PM 2

TM04 4529 1509

TM04 4530 1509

Subject to alterations.

Argentina

Bombas GRUNDFOS de Argentina S.A.
Ruta Panamericana km. 37.500 Lote 34A
1619 - Garin
Pcia. de Buenos Aires
Phone: +54-3327 414 444
Telefax: +54-3327 411 111

Australia

GRUNDFOS Pumps Pty. Ltd.
P.O. Box 2040
Regency Park
South Australia 5942
Phone: +61-8-8461-4611
Telefax: +61-8-8340 0155

Austria

GRUNDFOS Pumpen Vertrieb Ges.m.b.H.
Grundfosstraße 2
A-5082 Grödig/Salzburg
Tel.: +43-6246-883-0
Telefax: +43-6246-883-30

Belgium

N.V. GRUNDFOS Bellux S.A.
Boomssteenweg 81-83
B-2630 Aartselaar
Tél.: +32-3-870 7300
Télécopie: +32-3-870 7301

Belorussia

Представительство ГРУНДФОС в
Минске
220123, Минск,
ул. В. Хоружей, 22, оф. 1105
Тел.: +(37517) 233 97 65,
Факс: +(37517) 233 97 69
E-mail: grundfos_minsk@mail.ru

Bosnia/Herzegovina

GRUNDFOS Sarajevo
Trg Heroja 16,
BiH-71000 Sarajevo
Phone: +387 33 713 290
Telefax: +387 33 659 079
e-mail: grundfos@bih.net.ba

Brazil

BOMBAS GRUNDFOS DO BRASIL
Av. Humberto de Alencar Castelo Branco,
630
CEP 09850 - 300
São Bernardo do Campo - SP
Phone: +55-11 4393 5533
Telefax: +55-11 4343 5015

Bulgaria

Grundfos Bulgaria EOOD
Slatina District
Iztochna Tangenta street no. 100
BG - 1592 Sofia
Tel. +359 2 49 22 200
Fax. +359 2 49 22 201
email: bulgaria@grundfos.bg

Canada

GRUNDFOS Canada Inc.
2941 Brighton Road
Oakville, Ontario
L6H 6C9
Phone: +1-905 829 9533
Telefax: +1-905 829 9512

China

GRUNDFOS Pumps (Shanghai) Co. Ltd.
51 Floor, Raffles City
No. 268 Xi Zang Road. (M)
Shanghai 200001
PRC
Phone: +86-021-612 252 22
Telefax: +86-021-612 253 33

Croatia

GRUNDFOS CROATIA d.o.o.
Cebini 37, Buzin
HR-10010 Zagreb
Phone: +385 1 6595 400
Telefax: +385 1 6595 499
www.grundfos.hr

Czech Republic

GRUNDFOS s.r.o.
Čajkovského 21
779 00 Olomouc
Phone: +420-585-716 111
Telefax: +420-585-716 299

Denmark

GRUNDFOS DK A/S
Martin Bachs Vej 3
DK-8850 Bjerringbro
Tlf.: +45-87 50 50 50
Telefax: +45-87 50 51 51
E-mail: info_GDK@grundfos.com
www.grundfos.com/DK

Estonia

GRUNDFOS Pumps Eesti OÜ
Peterburi tee 92G
11415 Tallinn
Tel: + 372 606 1690
Fax: + 372 606 1691

Finland

OY GRUNDFOS Pumpat AB
Mestarintie 11
FIN-01730 Vantaa
Phone: +358-3066 5650
Telefax: +358-3066 56550

France

Pompes GRUNDFOS Distribution S.A.
Parc d'Activités de Chesnes
57, rue de Malacombe
F-38290 St. Quentin Fallavier (Lyon)
Tél.: +33-4 74 82 15 15
Télécopie: +33-4 74 94 10 51

Germany

GRUNDFOS GMBH
Schlüterstr. 33
40699 Erkrath
Tel.: +49-(0) 211 929 69-0
Telefax: +49-(0) 211 929 69-3799
e-mail: infoservice@grundfos.de
Service in Deutschland:
e-mail: kundendienst@grundfos.de

Greece

GRUNDFOS Hellas A.E.B.E.
20th km. Athinon-Markopoulou Av.
P.O. Box 71
GR-19002 Peania
Phone: +0030-210-66 83 400
Telefax: +0030-210-66 46 273

Hong Kong

GRUNDFOS Pumps (Hong Kong) Ltd.
Unit 1, Ground floor
Siu Wai Industrial Centre
29-33 Wing Hong Street &
68 King Lam Street, Cheung Sha Wan
Kowloon
Phone: +852-27861706 / 27861741
Telefax: +852-27858664

Hungary

GRUNDFOS Hungária Kft.
Park u. 8
H-2045 Törökbalint,
Phone: +36-23 511 110
Telefax: +36-23 511 111

India

GRUNDFOS Pumps India Private Limited
118 Old Mahabalipuram Road
Thoraiappakkam
Chennai 600 096
Phone: +91-44 2496 6800

Indonesia

PT GRUNDFOS Pompa
Jl. Rawa Sumur III, Blok III / CC-1
Kawasan Industri, Pulogadung
Jakarta 13930
Phone: +62-21-460 6909
Telefax: +62-21-460 6910 / 460 6901

Ireland

GRUNDFOS (Ireland) Ltd.
Unit A, Merrywell Business Park
Ballymount Road Lower
Dublin 12
Phone: +353-1-4089 800
Telefax: +353-1-4089 830

Italy

GRUNDFOS Pompe Italia S.r.l.
Via Gran Sasso 4
I-20060 Truccazzano (Milano)
Tel.: +39-02-95838112
Telefax: +39-02-95309290 / 95838461

Japan

GRUNDFOS Pumps K.K.
Gotanda Metalion Bldg., 5F,
5-21-15, Higashi-gotanda
Shiagawa-ku, Tokyo
141-0022 Japan
Phone: +81 35 448 1391
Telefax: +81 35 448 9619

Korea

GRUNDFOS Pumps Korea Ltd.
6th Floor, Aju Building 679-5
Yeoksam-dong, Kangnam-ku, 135-916
Seoul, Korea
Phone: +82-2-5317 600
Telefax: +82-2-5633 725

Latvia

SIA GRUNDFOS Pumps Latvia
Deglava biznesa centrs
Augusta Deglava ielā 60, LV-1035, Rīga,
Tālr.: + 371 714 9640, 7 149 641
Fakss: + 371 914 9646

Lithuania

GRUNDFOS Pumps UAB
Smolensko g. 6
LT-03201 Vilnius
Tel: + 370 52 395 430
Fax: + 370 52 395 431

Malaysia

GRUNDFOS Pumps Sdn. Bhd.
7 Jalan Peguam U1/25
Glenmarie Industrial Park
40150 Shah Alam
Selangor
Phone: +60-3-5569 2922
Telefax: +60-3-5569 2866

México

Bombas GRUNDFOS de México S.A. de
C.V.
Boulevard TLC No. 15
Parque Industrial Stiva Aeropuerto
Apodaca, N.L. 66600
Phone: +52-81-8144 4000
Telefax: +52-81-8144 4010

Netherlands

GRUNDFOS Netherlands
Veluwezoom 35
1326 AE Almere
Postbus 22015
1302 CA ALMERE
Tel.: +31-88-478 6336
Telefax: +31-88-478 6332
e-mail: info_gnl@grundfos.com

New Zealand

GRUNDFOS Pumps NZ Ltd.
17 Beatrice Tinsley Crescent
North Harbour Industrial Estate
Albany, Auckland
Phone: +64-9-415 3240
Telefax: +64-9-415 3250

Norway

GRUNDFOS Pumper A/S
Strømsveien 344
Postboks 235, Leirdal
N-1011 Oslo
Tlf.: +47-22 90 47 00
Telefax: +47-22 32 21 50

Poland

GRUNDFOS Pompy Sp. z o.o.
ul. Klonowa 23
Baranowo k. Poznania
PL-62-081 Przeźmierowo
Tel: (+48-61) 650 13 00
Fax: (+48-61) 650 13 50

Portugal

Bombas GRUNDFOS Portugal, S.A.
Rua Calvet de Magalhães, 241
Apartado 1079
P-2770-153 Paço de Arcos
Tel.: +351-21-440 76 00
Telefax: +351-21-440 76 90

România

GRUNDFOS Pompe România SRL
Bd. Biruintei, nr 103
Pantelimon county Ilfov
Phone: +40 21 200 4100
Telefax: +40 21 200 4101
E-mail: romania@grundfos.ro

Russia

ООО Грундфос
Россия, 109544 Москва, ул. Школьная
39
Тел. (+7) 495 737 30 00, 564 88 00
Факс (+7) 495 737 75 36, 564 88 11
E-mail grundfos.moscow@grundfos.com

Serbia

GRUNDFOS Predstavništvo Beograd
Dr. Milutina Ivkovića 2a/29
YU-11000 Beograd
Phone: +381 11 26 47 877 / 11 26 47 496
Telefax: +381 11 26 48 340

Singapore

GRUNDFOS (Singapore) Pte. Ltd.
24 Tuas West Road
Jurong Town
Singapore 638381
Phone: +65-6865 1222
Telefax: +65-6861 8402

Slovenia

GRUNDFOS d.o.o.
Šlandrova 8b, SI-1231 Ljubljana-Črnuče
Phone: +386 1 568 0610
Telefax: +386 1 568 0619
E-mail: slovenia@grundfos.si

South Africa

Corner Mountjoy and George Allen Roads
Wilbart Ext. 2
Bedfordview 2008
Phone: (+27) 11 579 4800
Fax: (+27) 11 455 6066
E-mail: lsmart@grundfos.com

Spain

Bombas GRUNDFOS España S.A.
Camino de la Fuentequilla, s/n
E-28110 Algete (Madrid)
Tel.: +34-91-848 8800
Telefax: +34-91-628 0465

Sweden

GRUNDFOS AB
Box 333 (Lunnagårdsgatan 6)
431 24 Mölndal
Tel.: +46(0)771-392 23 00
Telefax: +46(0)31-331 94 60

Switzerland

GRUNDFOS Pumpen AG
Bruggacherstrasse 10
CH-8117 Fällanden/ZH
Tel.: +41-1-806 8111
Telefax: +41-1-806 8115

Taiwan

GRUNDFOS Pumps (Taiwan) Ltd.
7 Floor, 219 Min-Chuan Road
Taichung, Taiwan, R.O.C.
Phone: +886-4-2305 0868
Telefax: +886-4-2305 0878

Thailand

GRUNDFOS (Thailand) Ltd.
92 Chaloe Phrakiat Rama 9 Road,
Dokmai, Pravej, Bangkok 10250
Phone: +66-2-725 8999
Telefax: +66-2-725 8998

Turkey

GRUNDFOS POMPA San. ve Tic. Ltd. Sti.
Gebze Organize Sanayi Bölgesi
Insan dede Caddesi,
2. yol 200. Sokak No. 204
41490 Gebze/ Kocaeli
Phone: +90 - 262-679 7979
Telefax: +90 - 262-679 7905
E-mail: satis@grundfos.com

Ukraine

ТОВ ГРУНДФОС УКРАЇНА
01010 Київ, Вул. Московська 86,
Тел.: (+38 044) 390 40 50
Факс.: (+38 044) 390 40 59
E-mail: ukraine@grundfos.com

United Arab Emirates

GRUNDFOS Gulf Distribution
P.O. Box 16768
Jebel Ali Free Zone
Dubai
Phone: +971-4- 8815 166
Telefax: +971-4-8815 136

United Kingdom

GRUNDFOS Pumps Ltd.
Grovebury Road
Leighton Buzzard/Beds. LU7 8TL
Phone: +44-1525-850000
Telefax: +44-1525-850011

U.S.A.

GRUNDFOS Pumps Corporation
17100 West 118th Terrace
Olathe, Kansas 66061
Phone: +1-913-227-3400
Telefax: +1-913-227-3500

Uzbekistan

Представительство ГРУНДФОС в
Ташкенте
700000 Ташкент ул.Усмана Носира 1-й
тулик 5
Телефон: (3712) 55-68-15
Факс: (3712) 53-36-35