



## APPLICATIONS



## PUMPING DISTANCE

14 m  
↑

## WARRANTY



PUMPING STATIONS

# SANIFOS® 280

**NEW FOR  
2020**



Wastewater lifting station, **single-phase version**.  
**One Pump: Grinder or Vortex version available.**

Extension available as an accessory  
for deeper installations.

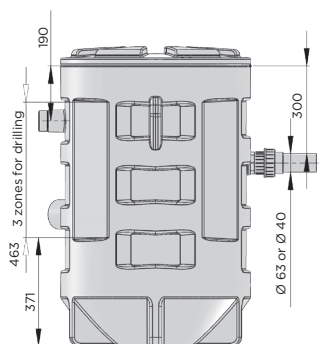
IP68 waterproof terminal block.

**Automatic pump operation.**

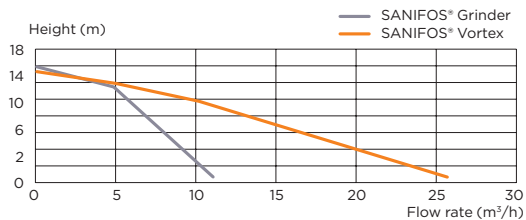
**Self-cleaning tank.**

**Options for incoming water connection:  
3 zones for custom drilling.**

### LIFTING STATION WITH 1 PUMP



### PUMP CURVE



### PACKAGING

Tank with pre-assembled hydraulic, isolation valve and non-return valve

Submersible pump with float switch

Alarm box

Handling chain, IP68 terminal block, cable gland

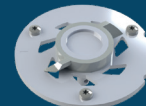
### TECHNICAL FEATURES

|   |  |
|---|--|
| <b>Tank volume</b>                        | 280 L  |
| <b>Material</b>                           | Polyethylene with 3 zones for drilling                 |
| <b>Ø Discharge pipework</b>               | Grinder: DN 40 (ext. 50 mm)<br>Vortex: DN 50 (ext. 63) |
| <b>Ø Ventilation</b>                      | 2 x Ø ext. 75  |
| <b>Maximum incoming water temperature</b> | 70°C intermittently (5 mins max)                       |
| <b>Incoming water connection</b>          | 250 - 600 mm (with extension 550 - 900 mm)             |
| <b>Flow rate.</b>                         | Grinder: 11 m³/h<br>Vortex: 27 m³/h                    |
| <b>Maximum height (Q = 0 m³/h)</b>        | Grinder: 14 m<br>Vortex: 13 m                          |
| <b>Maximum recommended height</b>         | 11m for Grinder and vortex                             |
| <b>Activation system</b>                  | Float  |
| <b>On/off level</b>                       | 400/100 mm   |
| <b>Voltage</b>                            | 220-240 / 50 Hz  |
| <b>Motor power</b>                        | 1500 W   |
| <b>Maximum current</b>                    | 6 A  |
| <b>Thermal overload protection</b>        | Yes  |
| <b>Weight of the station</b>              | 38 kg  |



Optional, wired alarm unit and float to be fixed in the tank

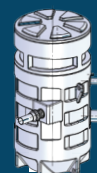
**Product Code:** SANIFOSALARM



Grinder Pro X K2



Vortex impeller KX V6



SANIFOS® extension (30cm)  
Incoming water connection: 500-900 mm

**Product Code:** RO250239

**Barcode :** EAN 3308815081298