

APPLICATIONS



PUMPING DISTANCE

14 m
↑

WARRANTY



SANIFOS 610
Single-phase Grinder
(1 pump)
Product Code:
SANIFOS 610 1 GR SP S
Barcode:
EAN 3308815081687

SANIFOS 610
Single-phase Vortex
(1 pump)
Product Code:
SANIFOS 610 1 VX SP S
Barcode:
EAN 3308815081670

SANIFOS 610
Single-phase Grinder
(2 pumps)
Product Code:
SANIFOS 610 2 GR SP S
Barcode:
EAN 3308815081656

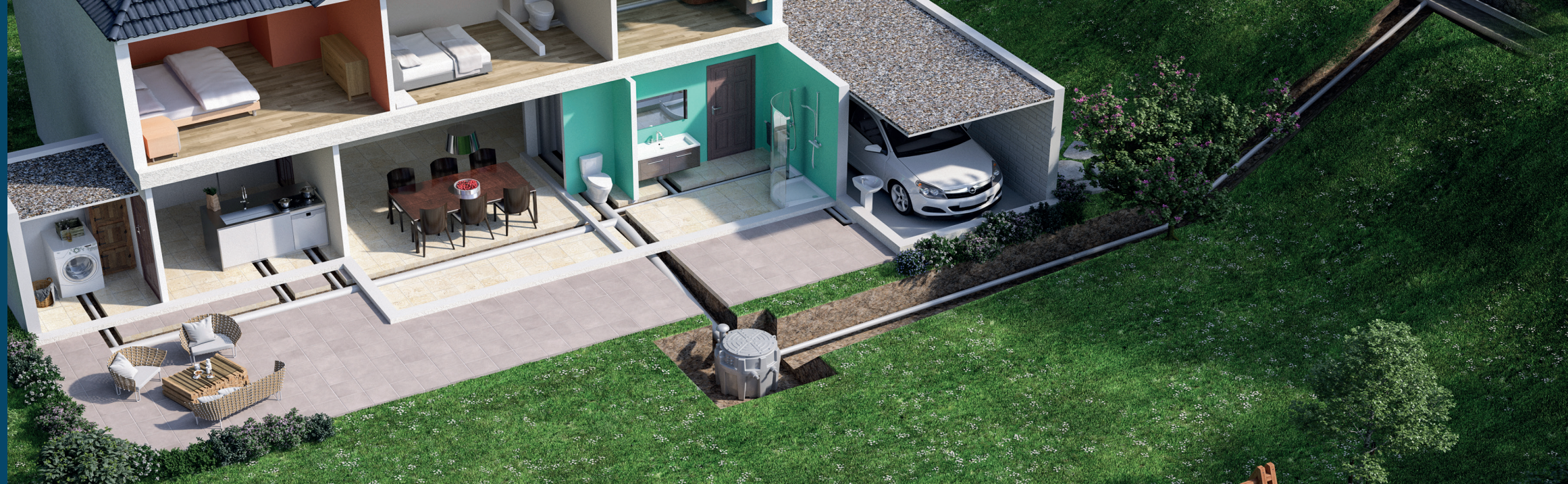
SANIFOS 610
Single-phase Vortex
(2 pumps)
Product Code:
SANIFOS 610 2 VX SP S
Barcode:
EAN 3308815081649



Smart control box



Alarm box (HF)



APPLICATIONS



PUMPING DISTANCE

16 m
↑

WARRANTY page 8



SANIFOS 610
Three-phase Vortex
Product Code:
SANIFOS 610 2 VX SP T
Barcode:
EAN 3308815081663



Smart control box



Alarm box (HF)



SANIFOS® 610 extension (40 cm)
Incoming water connection:
2 pumps: 725 - 1010mm
Incoming water connection:
1 pump: 725 - 980mm
Product Code: RO250100
Barcode:
EAN 3308815077826

SANIFOS® 610 *Single-phase* SANIFOS® 610 *Three-phase*

NEW FOR 2020



Lifting station with 1 or 2 pumps for wastewater **single-phase pump with Grinder or Vortex version.**

Extension available as an accessory for deeper installations.

Energy saving and limitation of motor wear thanks to a large **useful volume.**

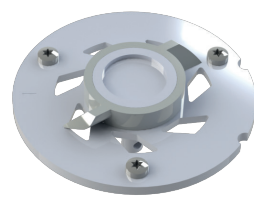
IP68 Waterproof terminal block.



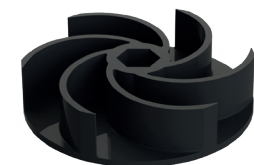
2 pumps work alternately to ensure even wear of the motors.

Self-cleaning tank.

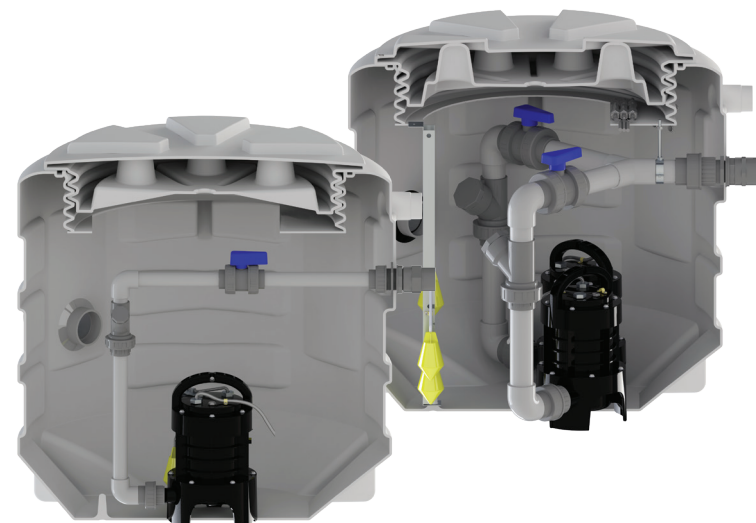
Comes with smart control box (2 pumps version): Interactive and intelligent station monitoring system.



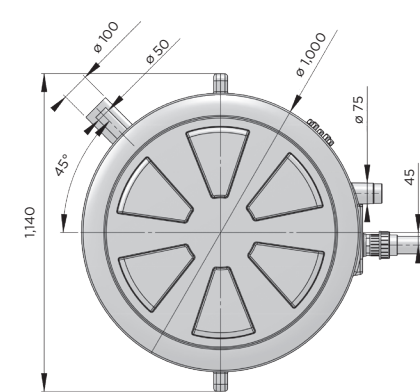
Grinder Pro XK2



Vortex impeller KX V6



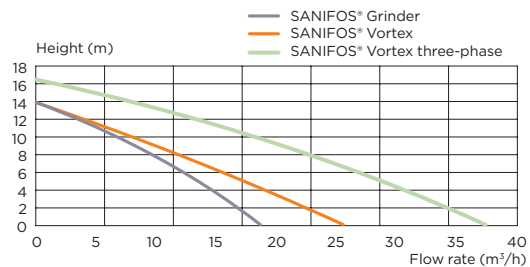
LIFTING STATION WITH 2 PUMPS



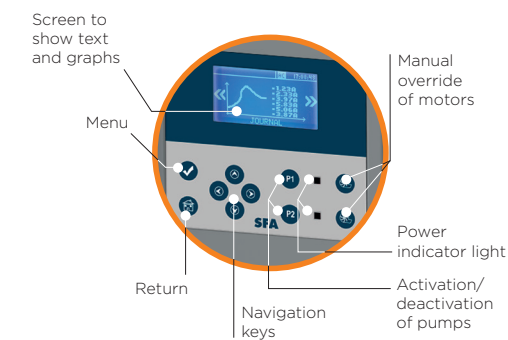
PACKAGING

- Tank with premounted hydraulics, 2 isolation valves, 2 non-return valves and 3 floats installed in the tank
- 1 or 2 submersible pumps
- Handling chains, cable glands, waterproof terminal blocks
- SMART control unit (2 pumps only)
- HF alarm box

PUMP CURVE



SMART BOX SYSTEM (2 MOTORS)



TECHNICAL FEATURES

	SANIFOS® 610 single-phase Grinder	SANIFOS® 610 single-phase Vortex	SANIFOS® 610 three-phase Vortex
TANK			
Tank volume	612 l		
Material	Polyethylene		
Diameter of inlet	6 entrances Ø ext 50/40/100/110/125		
Diameter of discharge pipework	DN 40 (ext 50)	DN 50 (ext 63)	
Ventilation	2 x ext Ø 75		
Maximum incoming water temperature	70°C intermittently (5 mins max)		
Flow rate	15 m³/h	25 m³/h	34 m³/h
Max height (Q = 0 m³/h)	14 m	13 m	16 m
Max recommended height	11 m	11 m (DN50)	15 m (DN50)
On/off level	500/135 mm		
Incoming water connection	2 pumps -325-610mm (with extension 725-1010mm) 1 pumps -325-580mm (with extension 725-980mm)		
Voltage	220-240 V/50 Hz		230-380 V/50 Hz
Motor power	2 x 1500 W		2 x 2600 W
PUMP			
Thermal overload protection	Yes		
Activation system	Float		
Non-return valve	2		
Maximum current	2 x 6 A		2 x 4.75 A
Weight of station	1 pump: 68 kg / 2 pumps: 88 kg		