


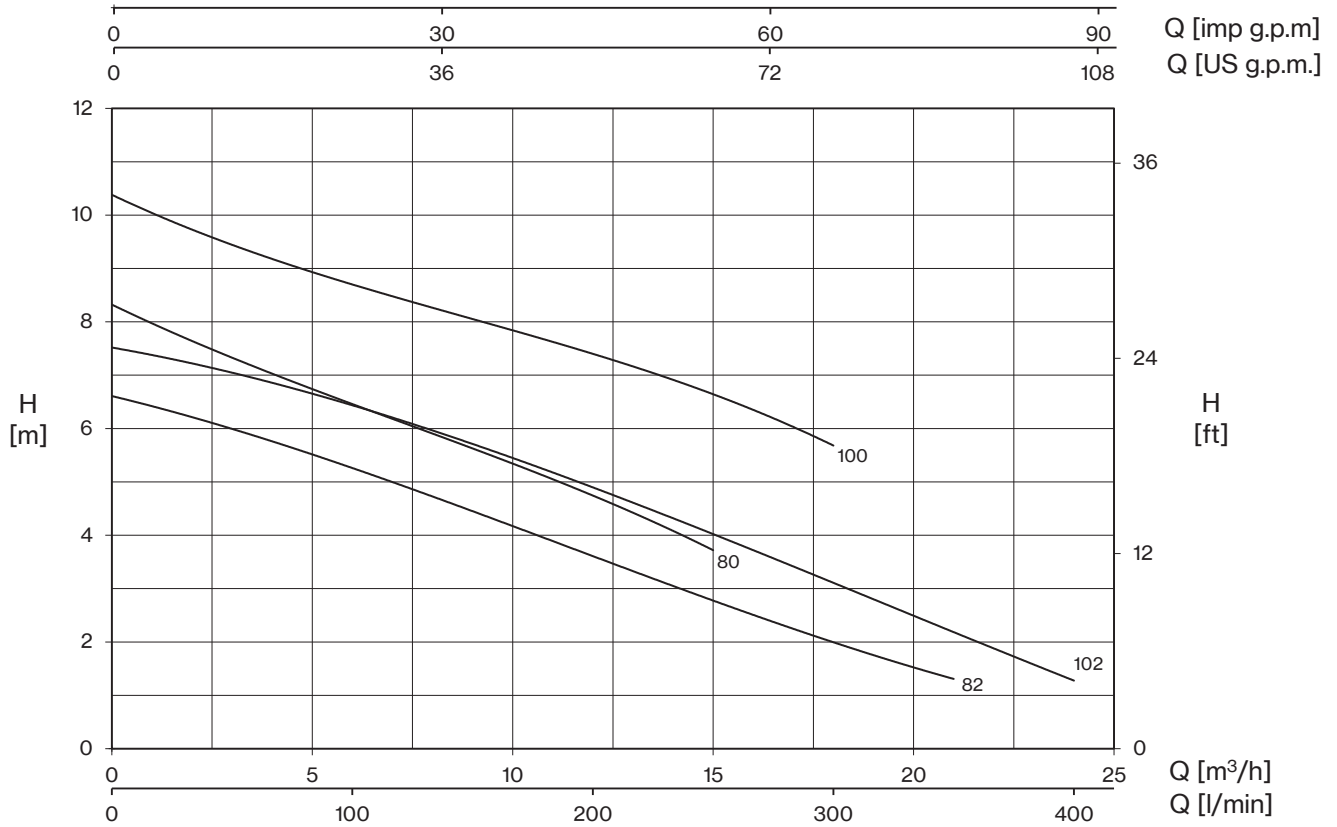
Construction features	
<b>Pump body</b>	cast iron
<b>Shell, motor cover, base support</b>	stainless steel
 <b>Impeller</b>	Vortex stainless steel (80-102); brass (150)
<b>Mechanical seal</b>	double seal with oil barrier: pump side with silicon carbide mechanical seal; motor side with sealing ring (80-102) or ceramic-graphite mechanical seal (150)
<b>Motor shaft</b>	stainless steel AISI 430
<b>Free passage</b>	Ø max 35 mm (80-100) Ø max 50 mm (82-150)
<b>Max submergence</b>	5 m
<b>Liquid temperature</b>	0 - 40 °C
<b>Cable</b>	H07 RN8F, 10 m
<b>G</b>	float switch

Motor	
	3~ 400V-50Hz
<b>2 Poles induction motor</b>	1~ 230V-50Hz (with thermal protection)
<b>Insulation class</b>	F
<b>Protection degree</b>	IPX8

TYPE	LOTS			
	TRUCK		CONTAINER	
	PALLET (cm)	N° pumps	PALLET (cm)	N° pumps
<b>DG 80-102</b>	80×120×145	48	80×120×190	76
<b>DG 150</b>	80×120×160	51	80×120×160	51

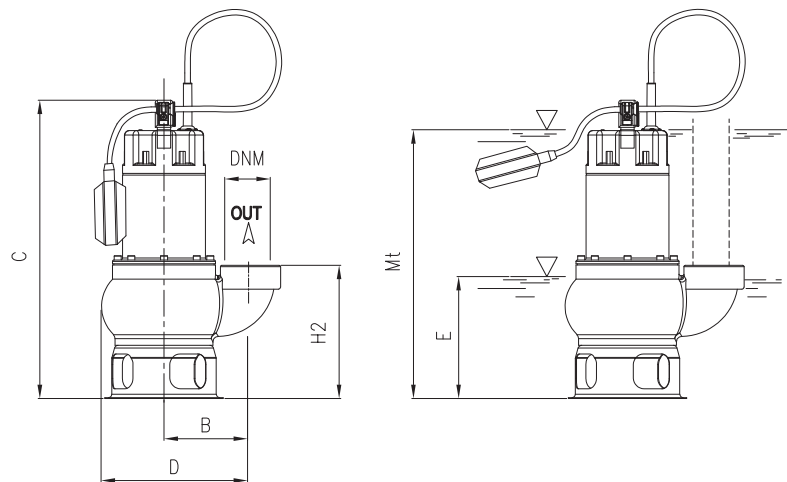


# DG



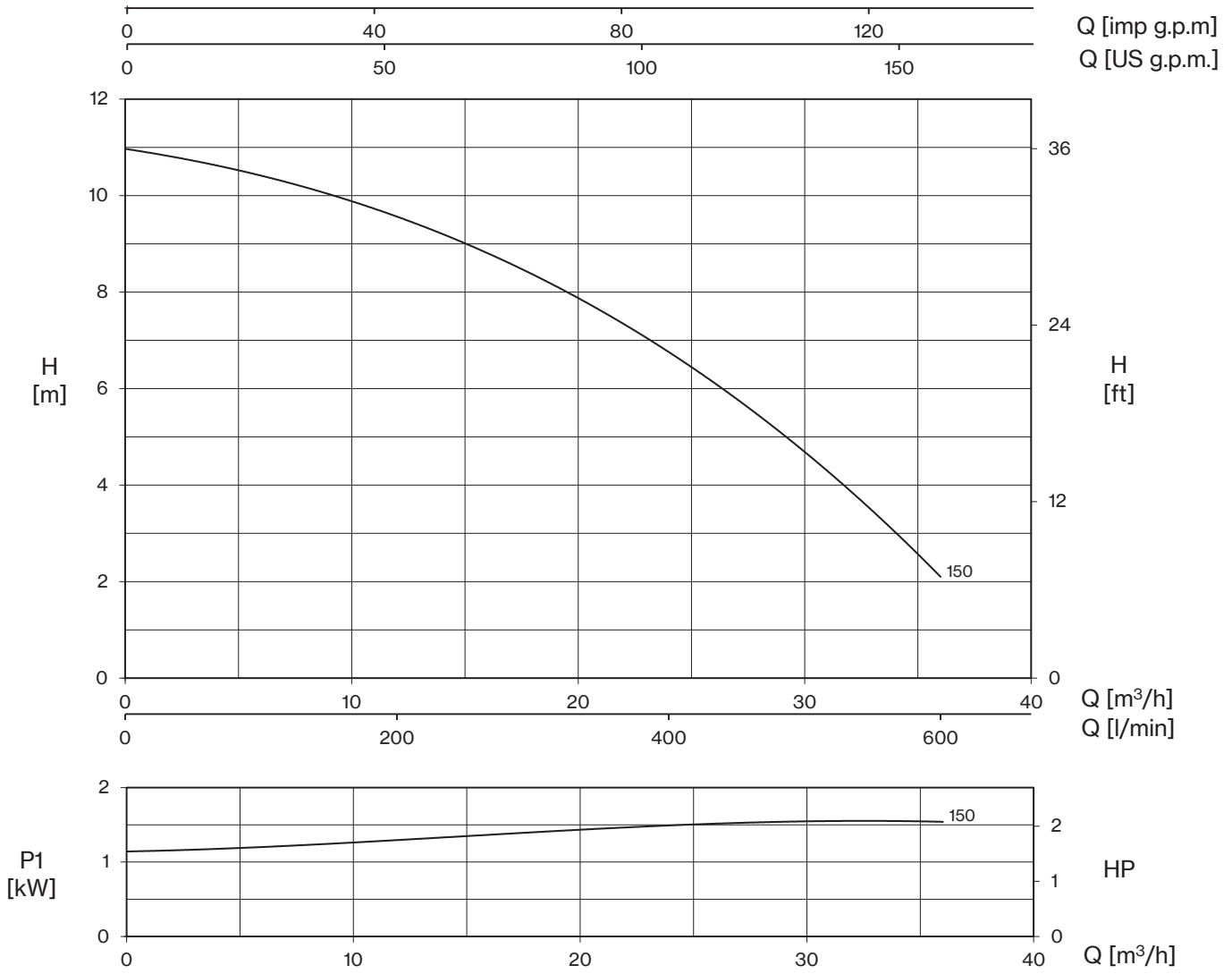
TYPE		W	AMPERE		Q (m³/h - l/min)									
1~	3~		1~	3~	0	3	6	9	12	15	18	21	24	
					0	50	100	150	200	250	300	350	400	
		1x230 V 50 Hz	3x400 V 50 Hz	H (m)										
DG 80 (G)	DGT 80	1050	4,7	2,2	8,3	7,4	6,4	5,6	4,8	3,7				
DG 80/2 (G)	DGT 80/2	1050	4,7	2,2	8,3	7,4	6,4	5,6	4,8	3,7				
DG 100 (G)	DGT 100	1350	6,2	2,8	10,4	9,4	8,7	8,1	7,4	6,6	5,7			
DG 100/2 (G)	DGT 100/2	1350	6,2	2,8	10,4	9,4	8,7	8,1	7,4	6,6	5,7			
DG 82 (G)	DGT 82	1000	4,5	2,1	6,6	6,0	5,3	4,4	3,6	2,8	2,0	1,3		
DG 102 (G)	DGT 102	1200	5,3	2,4	7,5	7,1	6,4	5,7	4,9	4,0	3,2	2,1	1,3	

E: maximum emptying level  
Mt: minimum liquid level for continuous duty



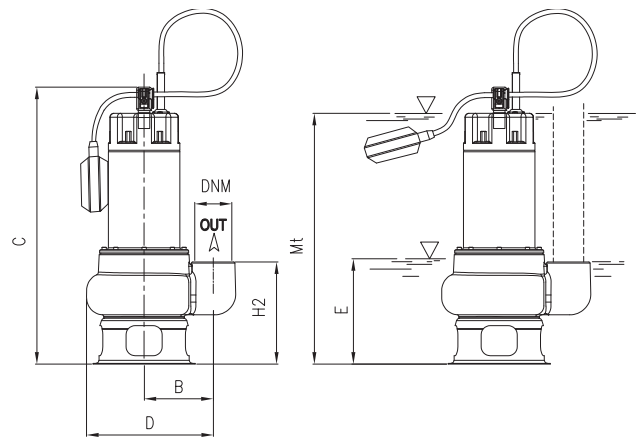
TYPE	DIMENSIONS (mm)										Kg
	B	C	D	E	H2	Mt	DNM	I	L	M	
DG 80 (G)	110	410	230	140	174	290	1"1/2G	250	183	448	13,5
DG 80/2 (G)	110	410	230	140	174	290	2"G	250	183	448	14
DG 100 (G)	110	410	230	140	174	290	1"1/2G	250	183	448	15,5
DG 100/2 (G)	110	410	230	140	174	290	2"G	250	183	448	15,5
DG 82 (G)	120	426	250	150	190	300	2"G	264	203	482	15
DG 102 (G)	120	426	250	150	190	300	2"G	264	203	482	16





TYPE		W	AMPERE		Q (m³/h - l/min)							
1~	3~		1~	3~	0	6	12	18	24	30	36	
					0	100	200	300	400	500	600	
						H (m)						
DG 150 (G)	DGT 150	1550	1x230 V 50 Hz	3x400 V 50 Hz	11,0	10,4	9,6	8,3	6,8	4,6	2,1	

E: maximum emptying level  
Mt: minimum liquid level for continuous duty



TYPE	DIMENSIONS (mm)										Kg
	B	C	D	E	H2	Mt	DNM	I	L	M	
DG 150 (G)	142,5	461	247,5	185	170	390	2" G	200	260	470	19

